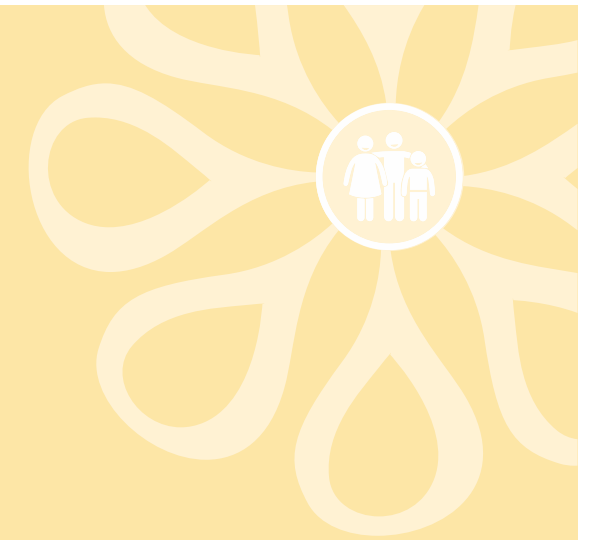


K U M A R
PROSPERA

Live Work Play



Image used for representation purpose only.



Live

You wanted a thoughtfully planned, well designed apartment with a spacious kitchen. You got it.

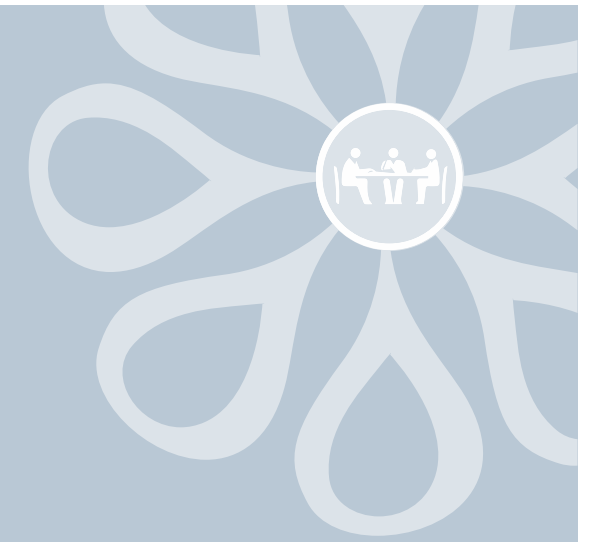
You wanted a beautifully planned landscape design. At Kumar Prospera, the entire landscape has been designed by Gregory Kunak, a famous landscape architect from Singapore.

You wanted open spaces and green cover with visual aesthetics. Kumar Prospera has 80% open spaces with a wide variety of plants and shrubs to give you an aromatic sensory experience and a cool atmosphere.

You wanted amenities within the township to enjoy a well lived life. You got it.



Image used for representation purpose only.

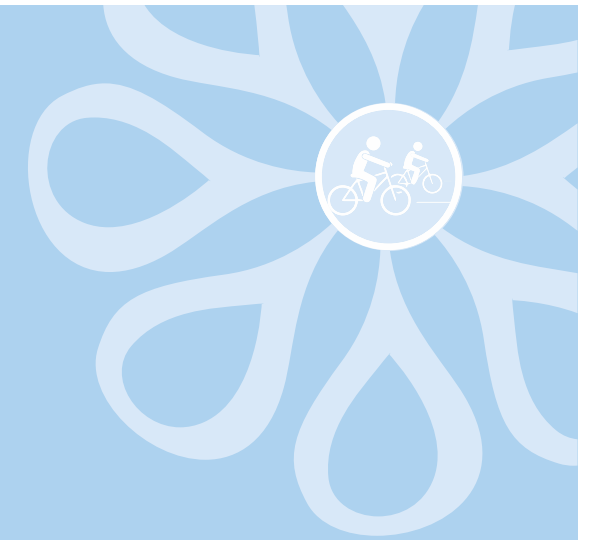


Work

You wanted to buy an apartment in a central location close to work to save commute time. You got it. Kumar Prospera is in the heart of Magarpatta, close to IT & ITES Parks so you can actually walk to work, and reach home in time for dinner with family instead of getting stuck in traffic.



Image used for representation purpose only.



Play

You wanted an apartment and amenities within the township to enjoy a well lived life. You got it.

Kumar Prospera gives you 30+ amenities including a Children's Play area, a 40 metre Swimming pool, a Landscaped Garden, a Tennis Court to name a few. You wanted Schools, Hospitals, Malls and Restaurants in the neighbourhood. You got it.

- ✿ Clubhouse
- ✿ Swimming pool
- ✿ Open air food court
- ✿ Party lawn
- ✿ Kid's play area
- ✿ Pedestrian portal
- ✿ Seating node
- ✿ Cricket enclosure
- ✿ Tennis court
- ✿ Basketball court
- ✿ Futsal court
- ✿ Badminton court
- ✿ Pedestrian circulation
- ✿ Palm planter
- ✿ Pool shelf
- ✿ Pool deck with lounges
- ✿ Elevated cabana
- ✿ Kid's pool
- ✿ Amphitheatre
- ✿ Metal ramp
- ✿ Roundabout
- ✿ Seniors plaza
- ✿ Trellis
- ✿ Yoga lawn
- ✿ Fitness stations
- ✿ Foot reflexology
- ✿ Skating rink
- ✿ Raised planter with trees / hedges
- ✿ Giant chess board



Amenities

An elevated amenity zone is what adds to the absolute beauty of Kumar Prospera. Our 30+ Amenities enrich your life by giving you everything you need in this township to lead a well lived life.



Bird's Eye View

Future Development (A6, A7, A8)



TOP VIEW

An artist's rendition of the proposed township.



1. Entry 1
2. Entry 2
3. Clubhouse
4. Swimming pool
5. Open air food court
6. Party lawn
7. Kid's play area
8. Pedestrian portal
9. Seating node
10. Kid's zone
11. Cricket enclosure
12. Tennis court
13. Basketball court
14. Futsal court
15. Badminton court
16. Skating rink
17. Fitness station
18. Yoga lawn
19. Giant chess board
20. Amphitheatre



Future Development (A6, A7, A8)

Amenities would be provided by the time the project is completed.



Image used for representation purpose only.

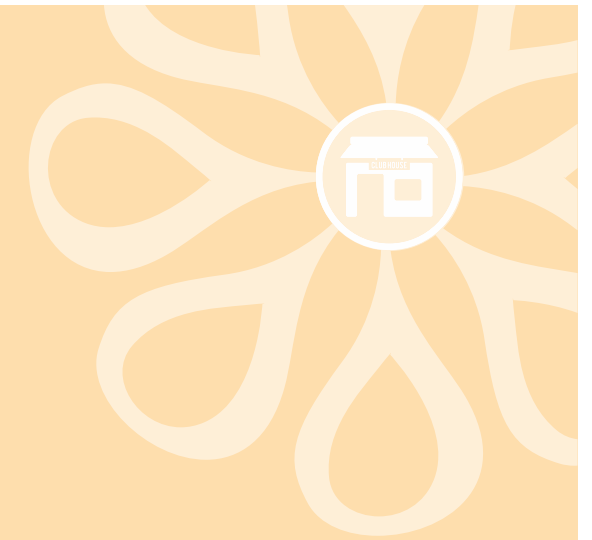


Multi-purpose Courts

Make maximum use of your leisure time. Get set to score a matchpoint in our tennis court, badminton court and multi-purpose court.



Image used for representation purpose only.



Clubhouse

Create happy memories in the club house, a two storey structure with a large ground space area. A large terrace gives you maximum flexibility for gatherings, parties and functions. Designed by the world's leading designer DBTA International, Singapore, it's the ideal place to host birthday parties or celebrate special occasions in style.



Image used for representation purpose only.

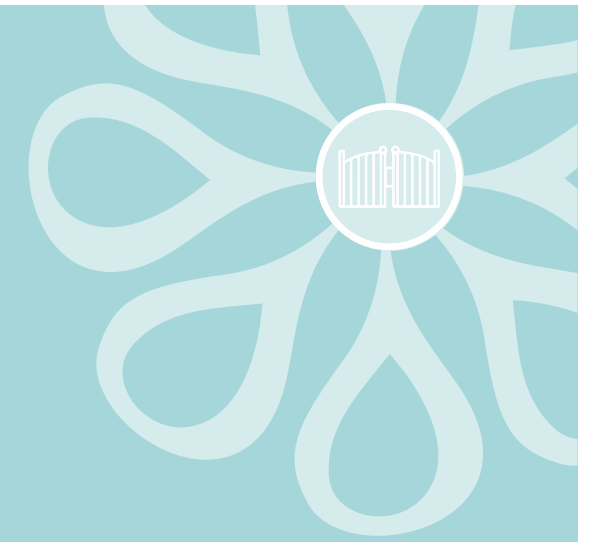


Swimming Pool

Our swimming pool is 40 metres long so you have to just swim for one lap instead of three. The kid's pool is adjacent to the main pool and clubhouse and is covered by overhead tensile fabric to provide shade while kids swim. A grid of palms shade dots the pool and offers lounge opportunities under shaded areas. Pool seats are available to provide in-water seating. Cabanas are placed in selective areas and offer a semi-private lounge experience.



Image used for representation purpose only.

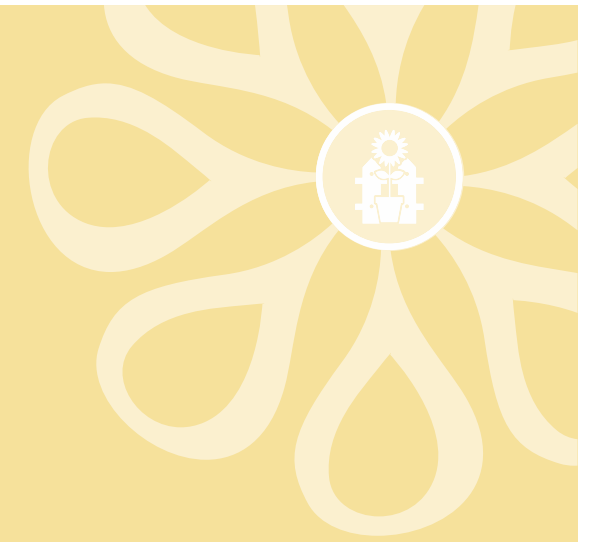


Entrance Gate

Make a grand entry. There are two smartly designed entrances at Kumar Prospera for smooth operation of the inflow and outflow of traffic. The guardhouse is centrally located to offer maximum visibility to approaching and departing vehicles, with boom barriers and sliding gates to provide maximum security. A central water feature with large scaled carved urns is a visual treat.



Image used for representation purpose only.



Podium Amenities

This view shows you amenities like pedestrian circulation, amphitheatre, metal ramp, elevated cabana, roundabout, senior's plaza, trellis, giant chess board, yoga lawn, fitness stations, foot reflexology, skating rink and a raised planter with trees/hedges.



Image used for representation purpose only.



Amphitheatre

For those who are patrons of the performing arts or love socialising, there's an open amphitheatre with an area for organised performances, social gatherings and celebrating festivals.

Specifications

Construction

- A-Class, earthquake resistant construction with Aluform technology.

Flooring / Dado

- Vitrified tiles in living and kitchen and bedrooms.
- Polished granite in toilets.
- PGVT tiles for toilet Dado.
- Anti skid tiles for terraces.
- Glazed ceramic tiles for kitchen dado above counter.

Wall and Ceiling

- Gypsum punning on walls.
- Superior OBD Paint for walls and ceilings.

Windows

- Powder-coated aluminium sliding windows with MS grills.

Railings for attached terraces

- Glass railing with Aluminium handrail for attached terraces.

Doors

- Vinyl skin pre-moulded flush door with SS fittings for entrance door.
- Vinyl skin flush doors with SS fittings for bedrooms and toilets.

Kitchen

- Granite kitchen counter.
- Stainless steel sink.
- Power plug point for water purifier and electrical point for exhaust fan.

Plumbing, Bathroom and Toilets

- Concealed plumbing.
- Ceramic sanitaryware of reputed brand.
- Single lever diverter in shower areas along with single lever basin mixer for all toilets.
- Provision for boilers and exhaust fans in all toilets.

Electrical

- Concealed copper wiring in the entire flat with ELCB and MCB.
- Modular electrical switch & sockets.
- Electric supply by way of 1 phase / 3 phase meter.
- Adequate points for lights, fans and TV.
- Telephone points in the living room and bedrooms.
- Provision for split AC in living room and master bedroom.
- Power plug point for cable TV.

Entrance Lobby

- Designer finish entrance lobby.

Lifts

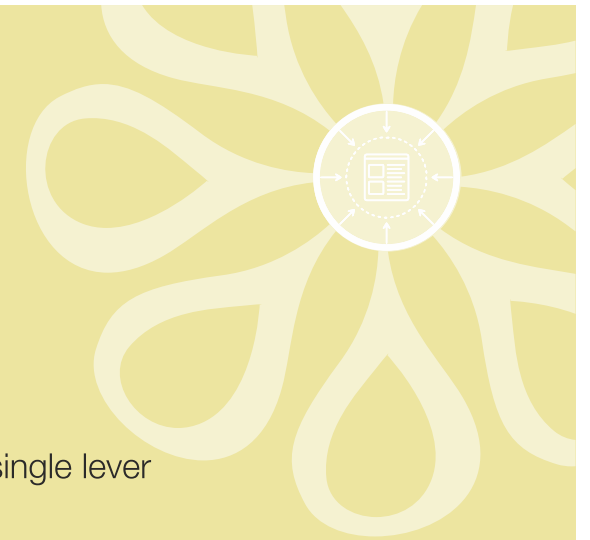
- Modern, automatic lifts of reputed make.

External Finish

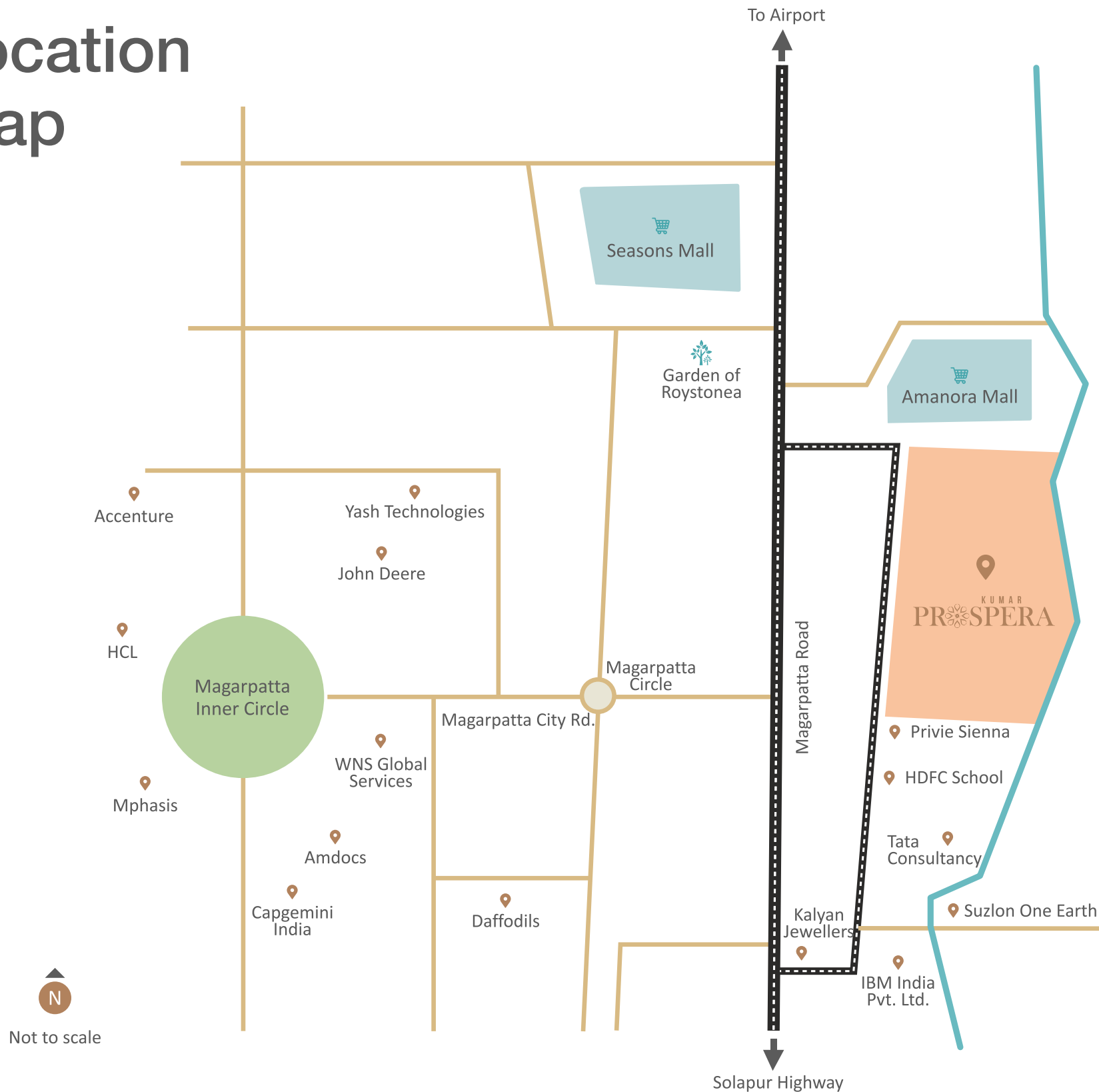
- Exterior grade texture paint.

Safety

- Intercom facility.
- Access control main entrance lobby at ground floor with CCTV camera.



Location Map



Malls

- Amanora town Centre
- Seasons Mall

Hospitals

- Sahyadri Hospital
- Noble Hospital
- Columbia Asia
- Sanjeevani Hospital

IT & ITES Park

- Magarpatta City
- Planet IT
- SP Infocity

Schools

- Amanora School
- HDFC School
- Wisdom World School
- VIBGYOR International School
- Pawar Public School





About Kumar Properties

Founded by Shri. K.H. Oswal and Vimal Kumar Jain on 15th August 1966, Kumar Properties initially catered to the rental segment, progressed to the construction of branded apartments in the 70s, shifted to high-rise buildings and bungalow projects in the 80s, pioneered in luxurious & mega-complexes in the 90s. At the turn of the millenium, they diversified into IT parks and commercial buildings.

One of the largest players in Pune's real estate market, Kumar Properties is a symbol of trust and integrity built through its superior quality work, timely project completion and personalised services. A professional organisation with impeccable credentials, Kumar Properties understands and appreciates what comfort, luxury and style mean to you.

-
- 53 years of legacy
 - 32,000+ happy customers
 - 130+ projects completed
 - 28 million sq.ft. delivered
-

Credits



DESIGN ARCHITECT

F. T. Khareghat,
Mumbai

LIAISON ARCHITECT

Jagdish P. Deshpande,
Pune

STRUCTURAL DESIGN CONSULTANT

Sunil Mutalik & Associates,
Pune

LANDSCAPE DESIGN

Element Design Studio Pte. Ltd.
(Gregory Kunak), Singapore

CLUB HOUSE DESIGN

DBTA International Pte. Ltd.
(David Tokiwa), Singapore

DEVELOPER

Kumar Agro Products Pvt. Ltd.

KUMAR
PROSPERA
Magarpatta Road



Call: **9595660066 / 9595770077**
Log onto www.kumarworld.com

SITE: MAGARPATTA ROAD, HADAPSAR, PUNE 411028.



A1 and A2 Towers have been registered via Maharera registration no. P52100014951. A3, A4, A5 towers will be covered under Maharera registration no. P52100022619.
This is available on the website: <https://maharera.mahaonline.gov.in> under registered projects.