

WHERE LAND ENDS
NATURE SPEAKS.



Kohinoor Group is a world-class real estate company based in Pune, leading the change through its revolutionary commercial and residential developments across the city. Whether by introducing globally recognized real estate practices or collaborating with renowned industry experts, the group has consistently set new benchmarks, delivering projects that are truly a league apart. From premium homes to commercial spaces, Kohinoor remains committed to meeting the evolving needs of its customers, crafting thoughtfully designed future-ready spaces.



Made of trust.
Admired for excellence.

SINCE 1983

49+

Projects
Delivered

11M+

Sq.Ft. of
Completed
Development

19M+

Sq. Ft. of
Ongoing
Development

11K+

Delighted
Customers

Completed Projects

- Kohinoor Shangrila - Ph.1, Pimpri
- Air Castle, Ravet
- Kohinoor Vyona, Pimpri
- Kohinoor Jeeva, Bibvewadi
- Kohinoor Latis, Talegaon
- Kohinoor Grandeur - Tower D, Ravet
- Kohinoor Falcon, Pashan-Sus Road
- Kohinoor Emerald, Sus
- Kohinoor Corner, Bopodi
- Kohinoor Coral, Hinjawadi Ph.3
- Kohinoor High Point, Model Colony
- Kohinoor Tower, Pimpri
- S3 Lifestyle, Pimple Saudagar
- Shubhashree - Ph.3, Akurdi
- Shubhashree Woods, Pimple Saudagar
- Kohinoor Reina, Kondhwa
- Tinsel Town, Hinjawadi Ph.2
- Saheel Residency, Thergaon
- Abhimaan Township - Ph.1 & 2, Shirgaon
- Princess Villa, Bhosari
- Kohinoor Viva City, Dhanori
- Sportsville by Kohinoor, Maan, Hinjawadi Ph.1
- Kohinoor Sapphire 2, Tathawade
- Kohinoor Sapphire 3, Tathawade
- Kohinoor Presidentia, Sopan Baug Annexe
- Courtyard One, Wakad

Ongoing Projects

- Kohinoor Shangrila - Ph.2, Pimpri
- Kohinoor Kaleido, New Kharadi
- Kohinoor Westview Reserve, New Wakad
- Abhimaan Township - Ph. 3, Shirgaon
- Kohinoor Viva Pixel - Ph.2, Dhanori
- Kohinoor Uptown Avenue, Punawale
- Kohinoor Central Park, Hinjawadi Ph.2
- Satori by Kohinoor, New Baner
- Kohinoor Famville, Hinjawadi Central (Ph.2)
- Kohinoor Viva Pixel - Ph.1, Dhanori
- Kohinoor Riverdale, Kharadi
- Kohinoor Woodshire, Bhugaon



The Kohinoor Philosophy

At Kohinoor, everything begins and ends with one simple promise, ***Sada Sukhi Raho.***

A blessing that goes beyond words in Indian Culture.

It shapes every home, every space, and every experience we create.

Because for us, it's never just about building structures; it's about building relationships that last a lifetime. And that's why we make sure we stay by your side throughout your buying journey.

With trust and transparency at our core, we build customer relationships based on the solid foundation of trust, integrity and transparency. And that has helped Kohinoor to grow into a name thousands of families believe in.

THE 5 SOLID PILLARS OF SADA SUKHI RAHO



Branded
Homes



Secure
Living



Sustainable
Living



Post Possession
SSR Help Desk



Healthy
Lifestyle



And after 40+ years of building homes,
we still believe, the best one is always
the next one. And so, this is it.



Pune's own Land's End

Here, you don't arrive at the end,

You arrive at a beginning.

A beginning of calmer mornings,

Deeper silences,

Golden-hour reflections,

And unhurried breaths.

It's where the clutter of the city falls away,

And the soft rhythm of river takes over.

It's not just a place, it's a feeling,

A quiet awakening,

A serene embrace,

A connection between land, river, and sky.

It's where time seems to pause,


The horizon stretches forever,

And life feels like a journey yet to unfold.

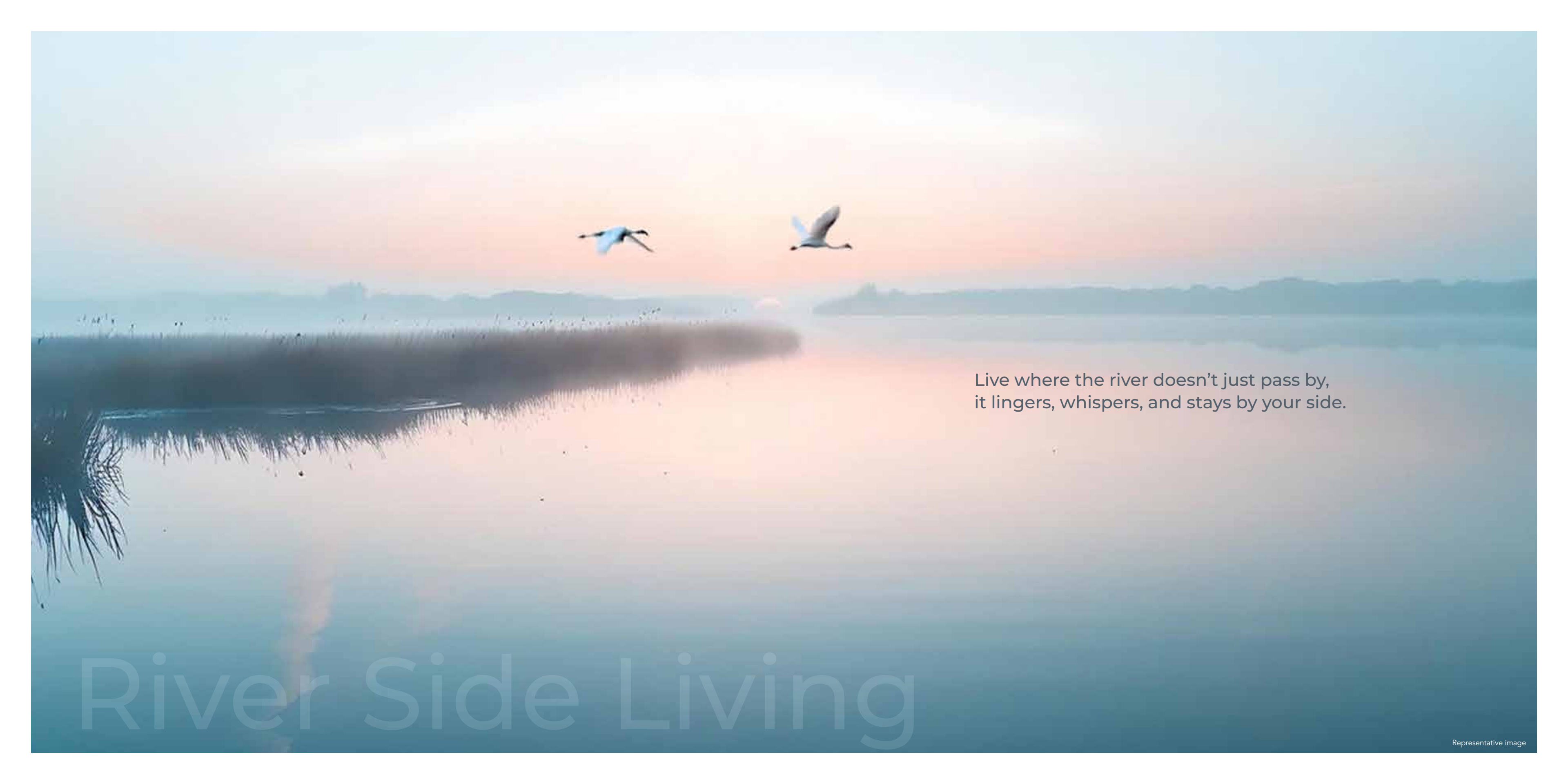
Welcome to Land's End. You found it, now live at it.
2 and 3 Bed homes by



 Kohinoor
Riverdale

An aerial photograph of a large, irregularly shaped swimming pool with a wooden deck. The pool is surrounded by lush greenery, including palm trees and other tropical plants. Several people are visible on the deck and in the pool. A white canopy is positioned near the bottom of the pool. The text "It's the little things that make the biggest difference when it comes to living your best life." is overlaid on the right side of the pool.

It's the little things that make
the biggest difference when
it comes to living your best life.



Live where the river doesn't just pass by,
it lingers, whispers, and stays by your side.


River Side Living

Representative image

Sometimes the best plan is to take
a deep dive and wash your worries away.

Lagoon Pool

Representative image

A person with long dark hair, wearing a light-colored long-sleeved shirt and a dark pleated skirt, stands with their back to the camera in a dense forest. They are looking up at tall, slender trees where bright sunlight rays (crepuscular rays) stream down through the canopy, creating a magical atmosphere. The ground is covered in lush green ferns and other forest floor vegetation.

Take a walk where the sunlight
plays hide and seek with you.

Dense Plantation



INDOOR

- Clubhouse
- Multipurpose Hall
- Indoor Games
- Co-working Space

FITNESS AND SPORTS

- Multipurpose Sports Court
- Outdoor Yoga Deck
- Jogging Track
- Outdoor Gymnasium
- Tot Lot Area
- Adults Swimming Pool
- Kids' Pool
- Indoor Gym

Amenities

Artist's impression



Artist's impression

Jogging Track



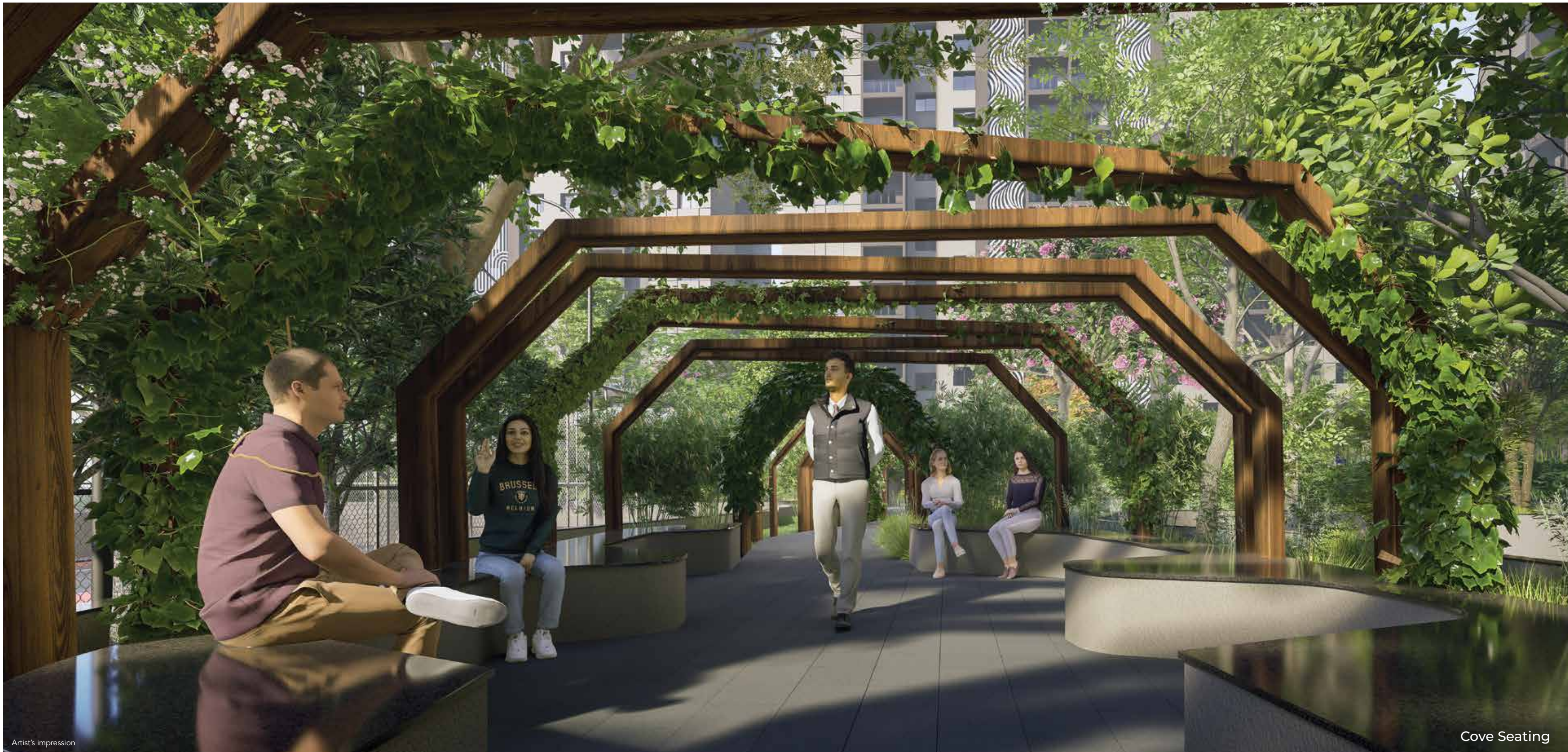
Artist's impression

Outdoor Gymanasium



Artist's impression

Kid's Pool



Artist's impression

Cove Seating



**OPEN GREENS
AND SIT-OUTS**

- Party Lawn
- Stage
- Pool Deck
- View Deck
- Cove Seating
- Herbal Garden
- Lawn Mound Seating
- Barbeque Counter Area

Representative image

Herbal Garden



Artist's impression

Tot Lot Area



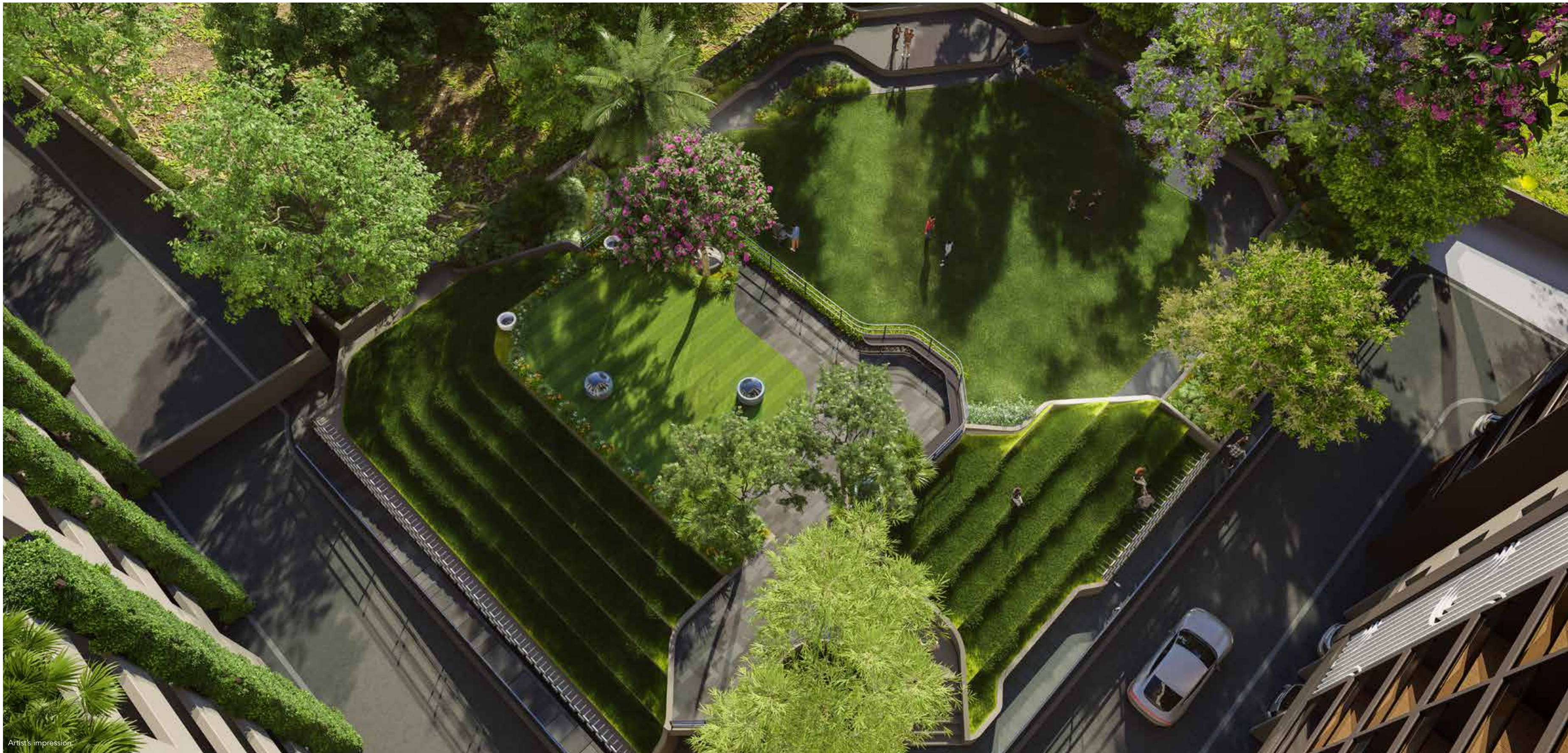
Artist's impression

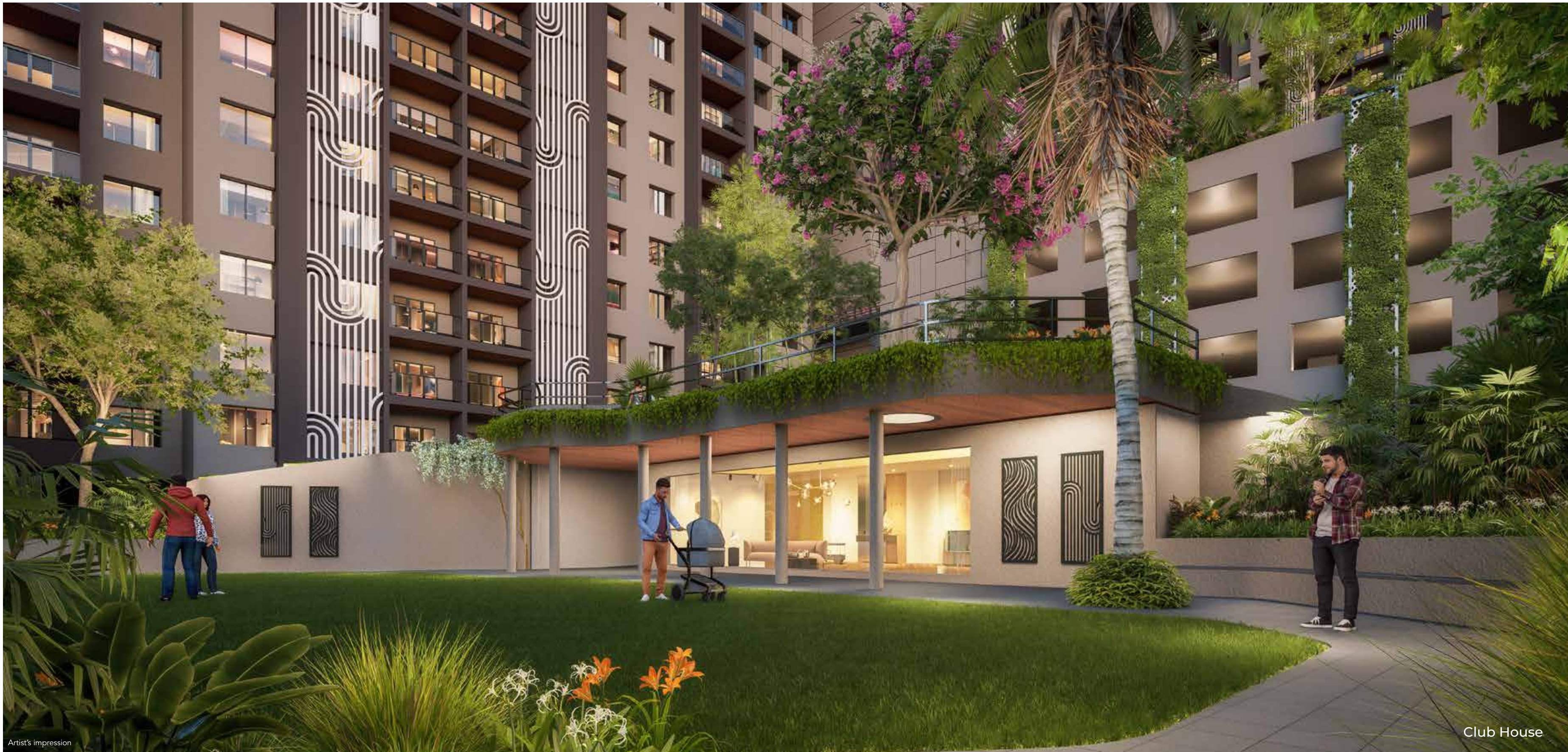
Multipurpose Sports Court



Artist's impression

View Deck



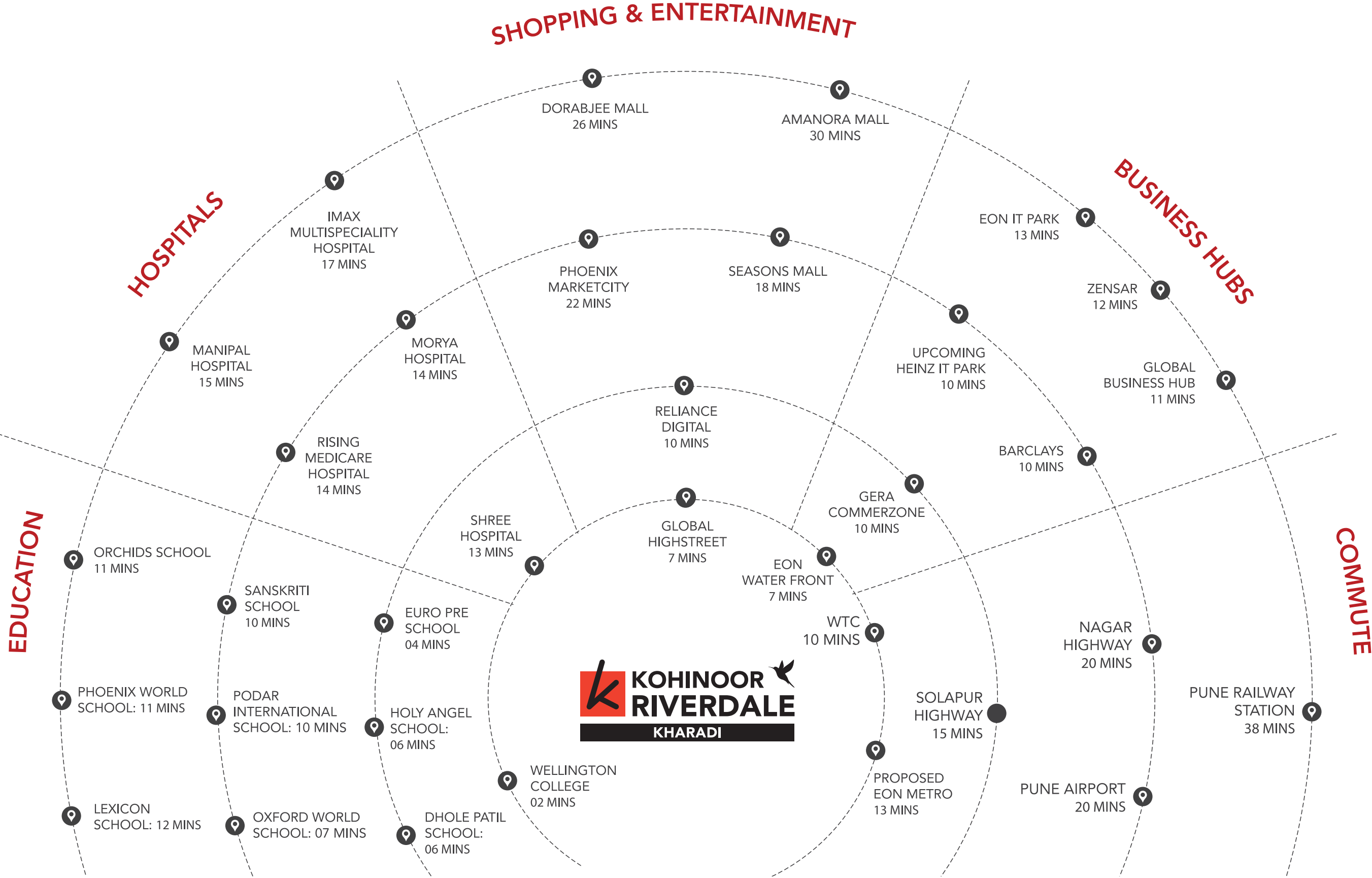


LOCATION MAP

TOWARDS AHILYANAGAR →



KEY DISTANCES



MASTER PLAN

LEGEND

- A. Entry / Exit Gate
- B. 6.00m Wide Driveway
- C. Open Parking
- D. Visitor Parking
- E. Open Space on Ground
- F. Earth Structure
- G. Stage + Lawn
- H. Drop Off

PODIUM AMENITIES

- I. Landscape on Podium
- J. Swimming Pool
- K. Totlot Area
- L. Multipurpose Sports Court
- M. Outdoor Gym
- N. Walkway with Seating
- O. Peripheral Plantation
- P. Indoor Gym and Co-working Space at Lower Level





PROJECT LEVEL HIGHLIGHTS

- RCC framed aluform shuttering
- AAC block work
- All tower Parking + 27 floors
- Designer Entrance Plaza
- Amenities for all age group

WINDOWS & DOORS

- Three-track Domal series (25mm size) powder-coated aluminium windows with mosquito nets
- MS grill for bedrooms and kitchen windows from inside
- Main door: Laminated flush door with night latch, SS handle, and magnetic door magnet
- Bedroom door: Laminated Flush door with cylindrical lock with S.S. Hinges
- Toilet flush door with cylindrical lock and S.S. hinges
- Provision for an exhaust fan in toilets and kitchen

FLOORING

- 1200 mm x 600 mm – Vitrified double charge tile for the entire apartment, Kitchen Wall dado, Attached Terrace (Varmora/Kajaria/Colortile/ Equivalent)
- 300 mm X 300 mm – Anti-skid tile for dry balcony& toilet floor. Wall dado tile (Varmora/Kajaria/Colortile/Equivalent)
- 300 mm X 600 mm – Toilet wall base tile (Varmora/Kajaria/Colortile/Equivalent)
- Height of kitchen dado above platform- 2ft above kitchen otta including skirting (As per Sample Flat)



Representative image

RAILING

- 1200 mm high glass railing with SS grab bar including RCC up-stand

KITCHEN

- Gemstone mustard-full body vitrified tile platform with Kadappa stand+black paint with SS sink (21"X18") - Nirali/Equivalent
- SS sink in dry terrace (24"X18")- Nirali/Equivalent

ELECTRIFICATION & CABLING

- Wires – Polycab/Finolex/KIE/Equivalent
- Switches – Schneider Livia/Equivalent
- Telephone/Data point in living room
- TV point in the master bedroom and living room
- AC point provision in the master bedroom
- Generator backup for lifts and common areas

LIFTS

- Automatic elevators

BATHROOM

- Concealed plumbing
- CP Fittings – Lyric series – Jaquar/Equivalent
- Metropole flush valves – Jaquar/Equivalent
- Sanitaryware: Jaquar/Equivalent
- Hot and cold mixing diverter in toilets
- Solar water supply in one master bedroom toilet
- STP-treated water supply for flush use

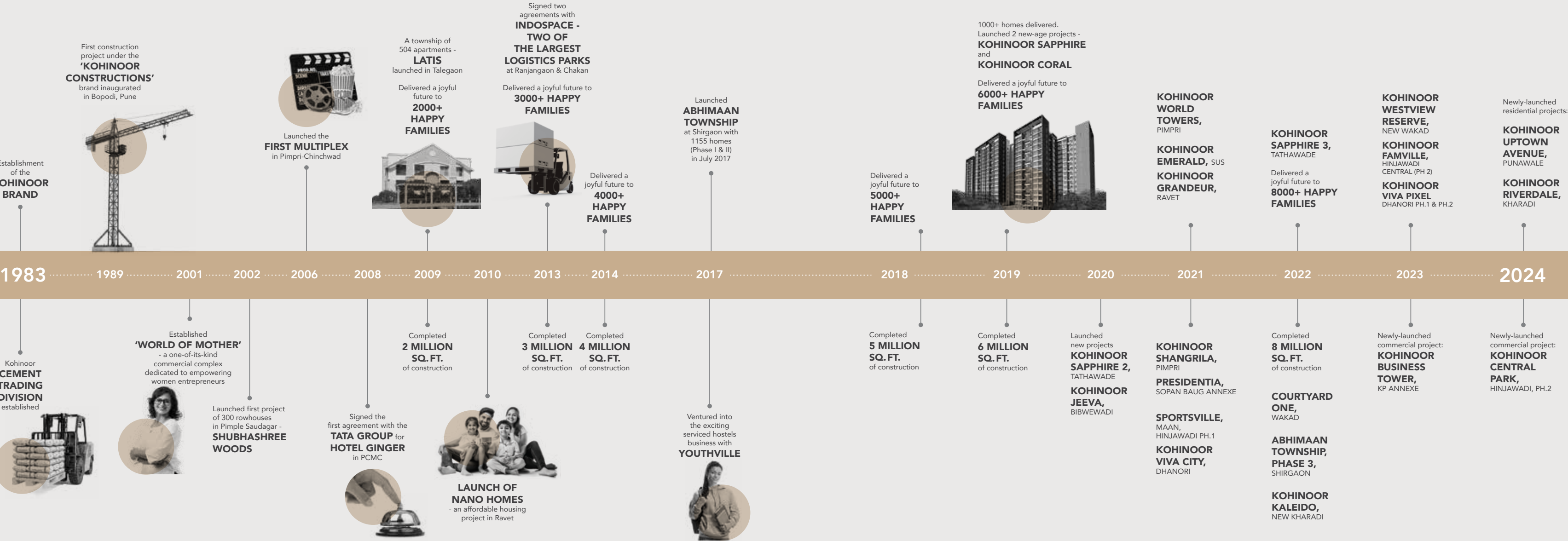
WALL FINISHES & PAINT

- Gypsum-finished wall & ceiling
- 2 coats of acrylic premium emulsion paint for internal wall & ceiling
- External wall with textured acrylic paint
- Matt finished painting on grills and staircase railing

SECURITY SYSTEM

- CCTV in common areas
- VDP provision for each flat
- Security room with entry & exit gate as per design

KOHINOOR LEGACY





Site Address: Kohinoor Riverdale Experience Center, Behind Yoo Villas, Kharadi, Pune

Call: 095 6100 1003 | www.kohinoorpune.com

Representative image

Disclaimer: The contents including images, text, graphics, etc., used in this brochure are solely for informational purposes and are not intended to constitute an offer or solicitation. All images which are not actual photographs, are the artist's impressions and are indicative of the project and spaces. No furniture/s or accessories shown in the visuals are provided with the unit/tenement/apartment. The company is not responsible for the consequences of any action taken by the viewer relying purely on the material/information provided in this brochure.



MahaRERA No.: Phase I-P52100056021 | MahaRERA No.: Phase II-P52100079217

Available at website: maharera.mahaonline.gov.in | KRD-BRO-MAY25-1000

