



## Tower 4 - Plans



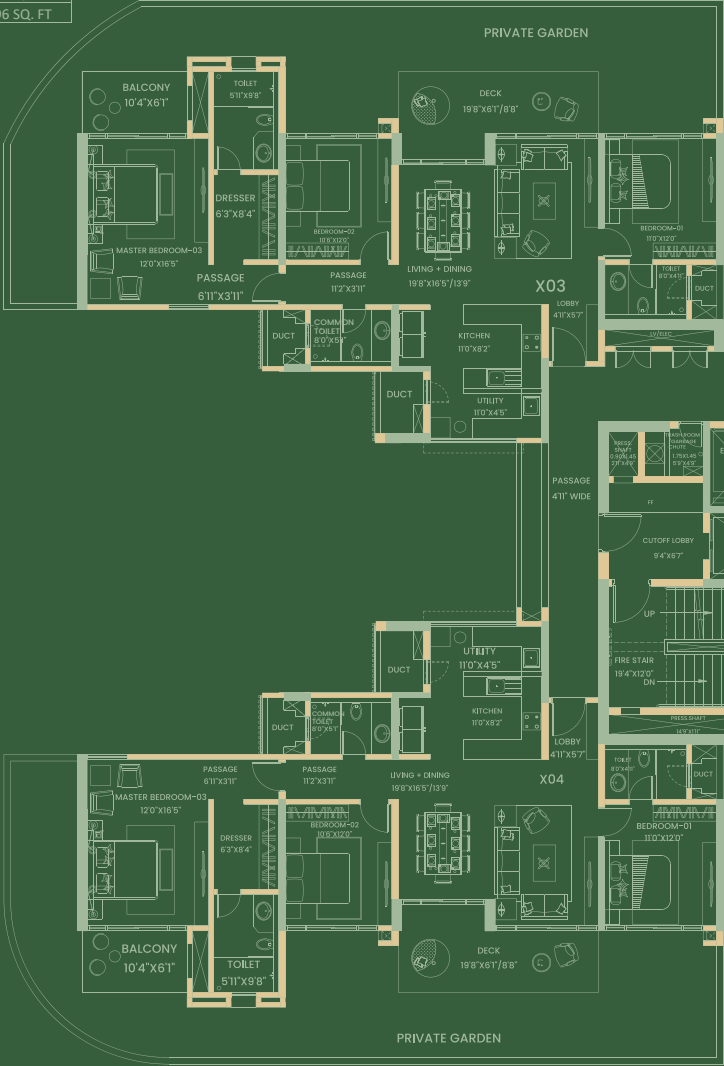
# MASTER LAYOUT PLAN



1. Grand entrance exit with water feature
2. School bus drop off
3. Lush planting with seating plaza
4. Gully cricket
5. Leisure lawn
6. Luxury tower 1
7. Club entry & guest drop-off
8. Pollinator garden
9. Fern garden
10. Orchid garden
11. Festival lawn
12. Kid's play area
13. Skate park with tents
14. Activity zone
15. Star jasmine garden
16. Outdoor gym
17. Fire side charcha
18. Putting golf
19. Existing well with mist
20. Party lawn
21. Entry with seating
22. Stream front garden
23. Restaurant lawn
24. Feature sitting

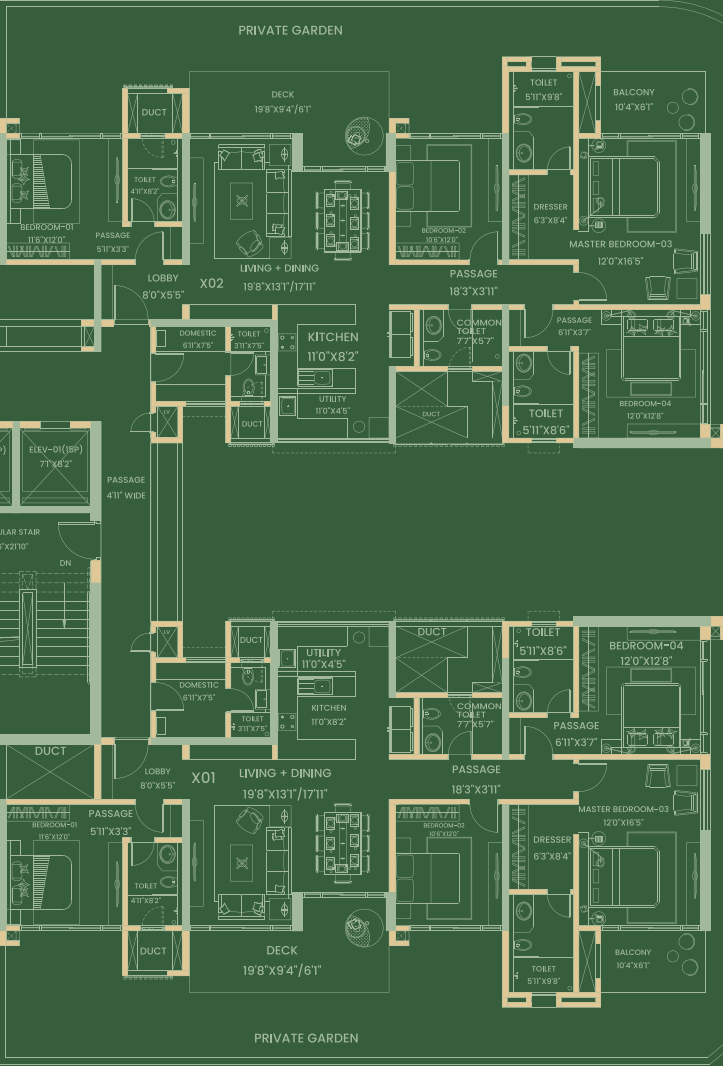
X03  
3BHK (CANAL FACING)

AREA OF FLAT	116.27 SQ. M
AREA OF DECKS	23.40 SQ. M
TOTAL AREA OF FLAT	139.67 SQ. M
	1503.4 SQ. FT
PRIVATE GARDEN AREA	60.29 SQ. M
	648.96 SQ. FT



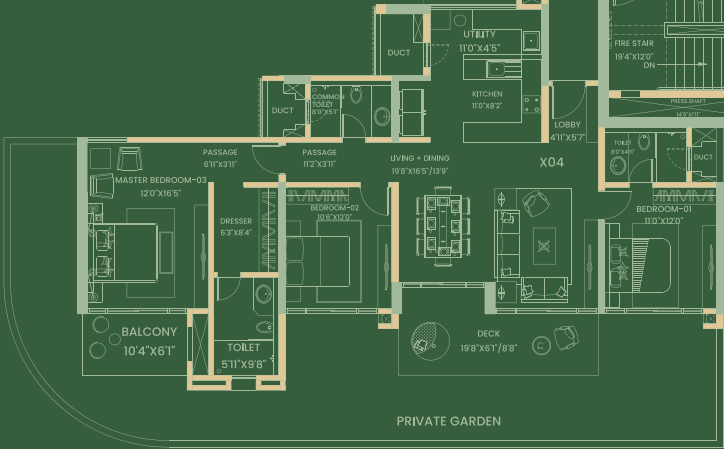
X02  
4BHK (CANAL FACING)

AREA OF FLAT	153.33 SQ. M
AREA OF DECKS	23.90 SQ. M
TOTAL AREA OF FLAT	177.23 SQ. M
	1907.7 SQ. FT
PRIVATE GARDEN AREA	81.82 SQ. M
	880.7 SQ. FT



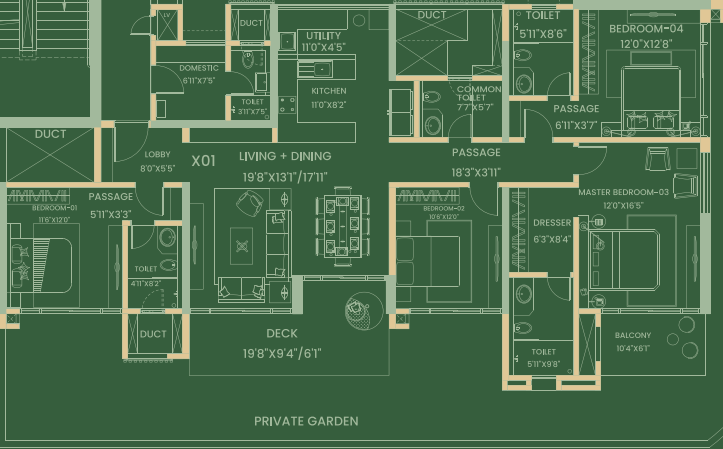
X04  
3BHK (VILLA FACING)

AREA OF FLAT	116.27 SQ. M
AREA OF DECKS	23.40 SQ. M
TOTAL AREA OF FLAT	139.67 SQ. M
	1503.4 SQ. FT
PRIVATE GARDEN AREA	62.08 SQ. M
	668.22 SQ. FT



X01  
4BHK (VILLA FACING)

AREA OF FLAT	153.33 SQ. M
AREA OF DECKS	23.90 SQ. M
TOTAL AREA OF FLAT	177.23 SQ. M
	1907.7 SQ. FT
PRIVATE GARDEN AREA	81.90 SQ. M
	881.56 SQ. FT



LUXURY TOWER 4-PODIUM FLOOR

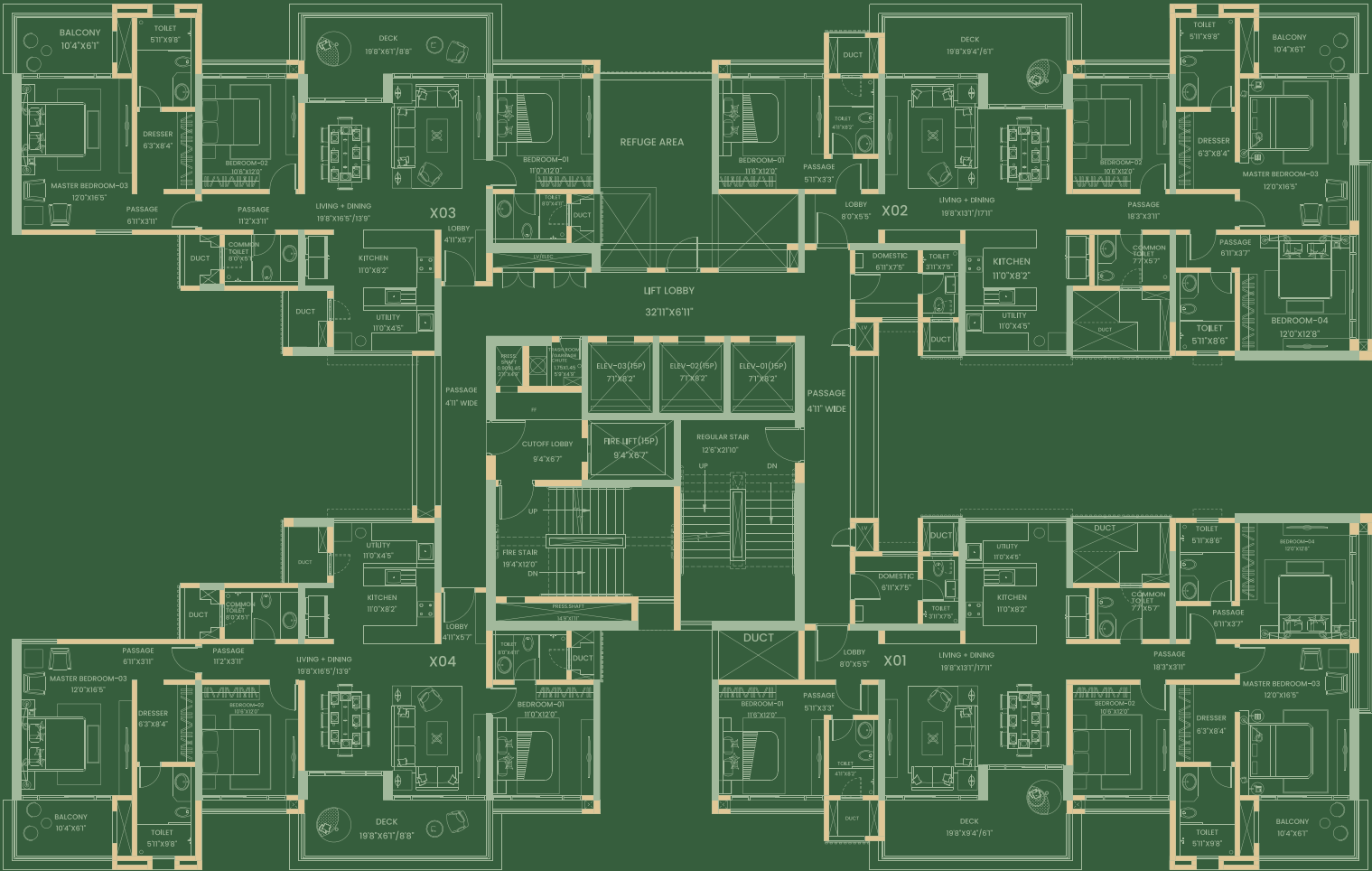


X03  
3BHK (CANAL FACING)

AREA OF FLAT	116.27 SQ. M
AREA OF DECKS	23.40 SQ. M
TOTAL AREA OF FLAT	139.67 SQ. M
	1503.40 SQ. FT

X02  
4BHK (CANAL FACING)

AREA OF FLAT	153.33 SQ. M
AREA OF DECKS	23.90 SQ. M
TOTAL AREA OF FLAT	177.23 SQ. M
	1907.70 SQ. FT



X04  
3BHK (VILLA FACING)

AREA OF FLAT	116.27 SQ. M
AREA OF DECKS	23.40 SQ. M
TOTAL AREA OF FLAT	139.67 SQ. M
	1503.40 SQ. FT

X01  
4BHK (VILLA FACING)

AREA OF FLAT	153.33 SQ. M
AREA OF DECKS	23.90 SQ. M
TOTAL AREA OF FLAT	177.23 SQ. M
	1907.70 SQ. FT

LUXURY TOWER 4-REFUGE FLOOR

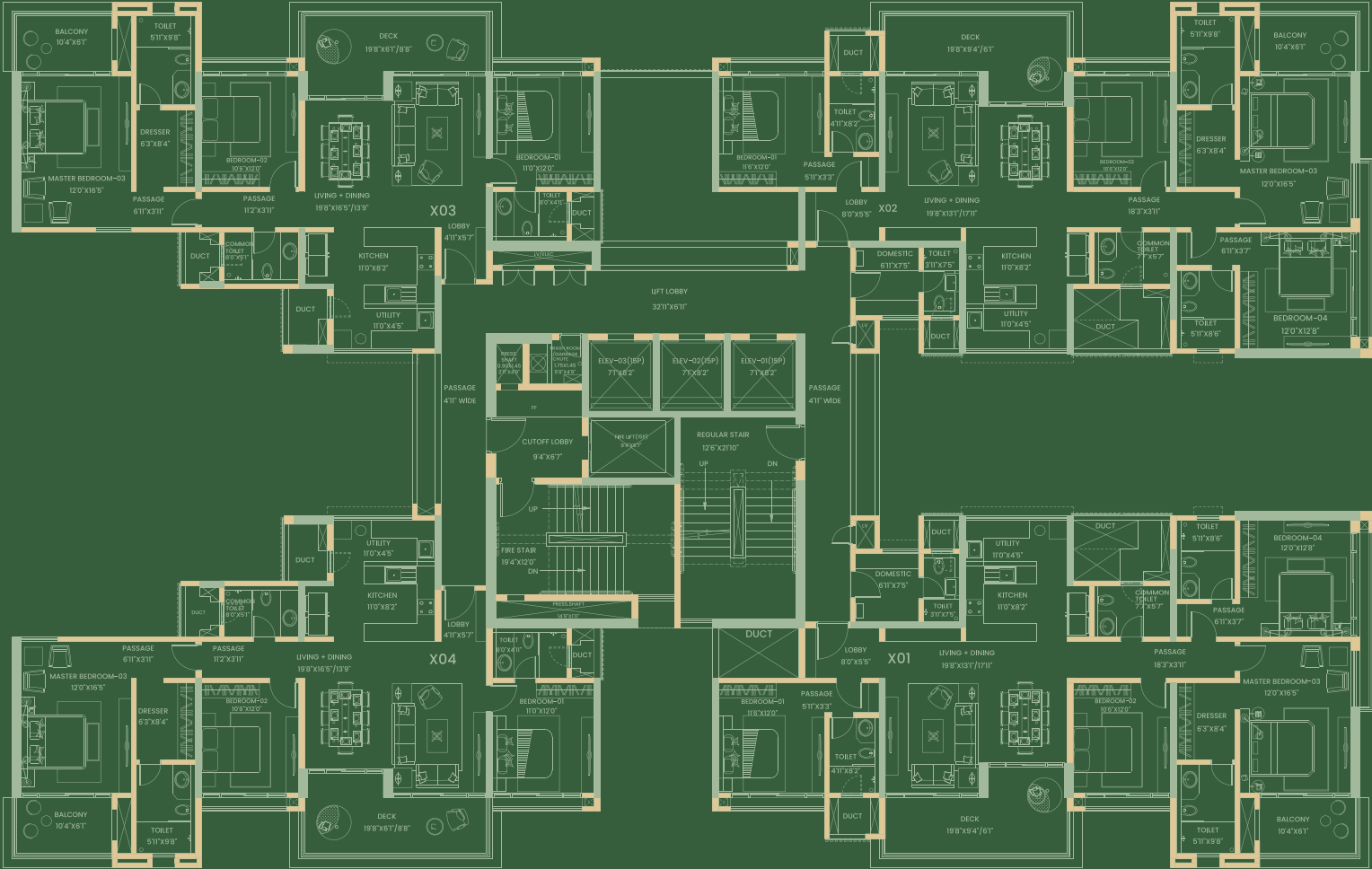


X03  
3BHK (CANAL FACING)

AREA OF FLAT	116.27 SQ. M
AREA OF DECKS	23.40 SQ. M
TOTAL AREA OF FLAT	139.67 SQ. M
	1503.40 SQ. FT

X02  
4BHK (CANAL FACING)

AREA OF FLAT	153.33 SQ. M
AREA OF DECKS	23.90 SQ. M
TOTAL AREA OF FLAT	177.23 SQ. M
	1907.70 SQ. FT



X04  
3BHK (VILLA FACING)

AREA OF FLAT	116.27 SQ. M
AREA OF DECKS	23.40 SQ. M
TOTAL AREA OF FLAT	139.67 SQ. M
	1503.40 SQ. FT

X01  
4BHK (VILLA FACING)

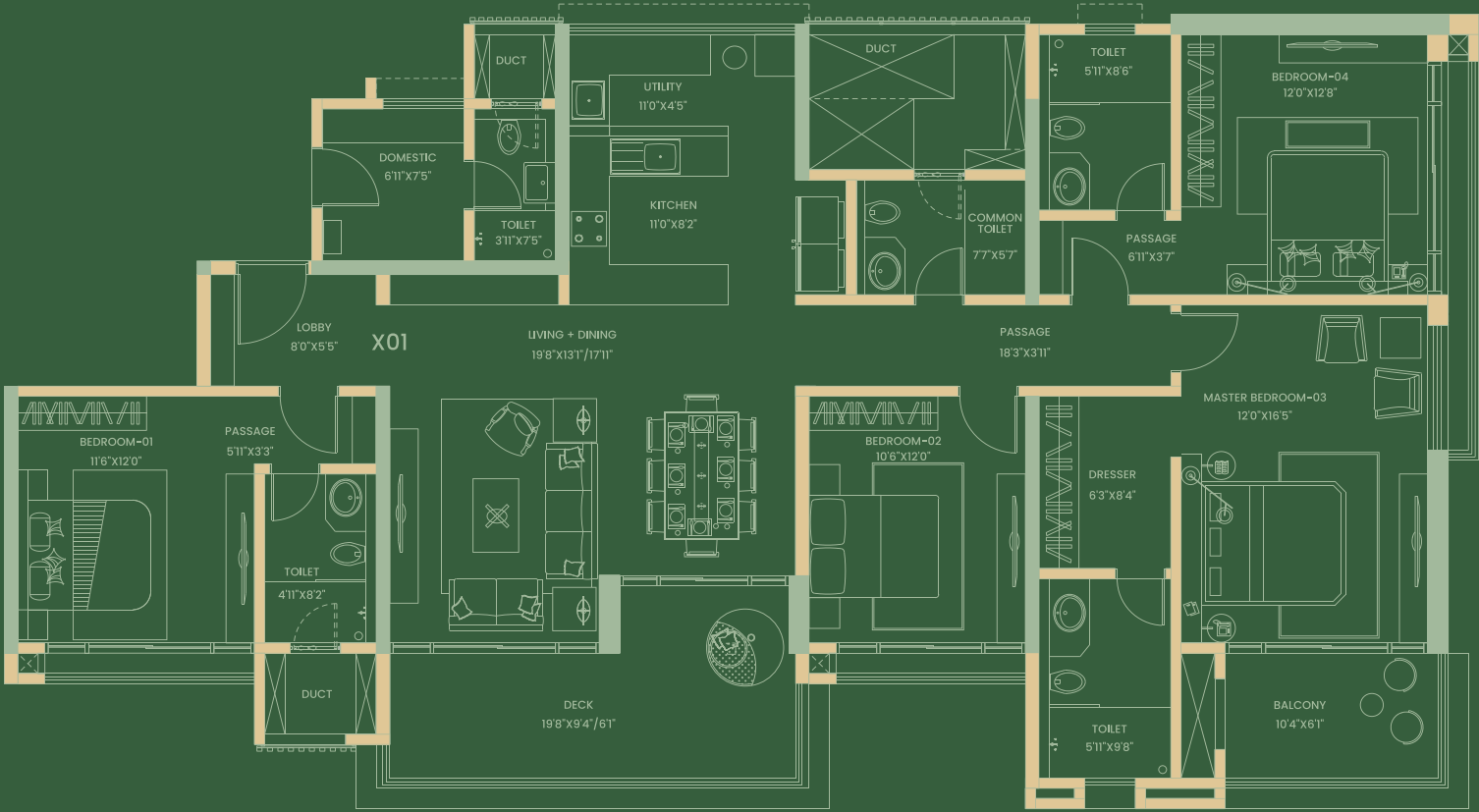
AREA OF FLAT	153.33 SQ. M
AREA OF DECKS	23.90 SQ. M
TOTAL AREA OF FLAT	177.23 SQ. M
	1907.70 SQ. FT

LUXURY TOWER 4-TYPICAL FLOOR



X01  
4BHK (VILLA FACING)

AREA OF FLAT	153.33 SQ. M
AREA OF DECKS	23.90 SQ. M
TOTAL AREA OF FLAT	177.23 SQ. M
	1907.70 SQ. FT



TOWER 4



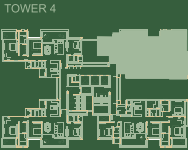
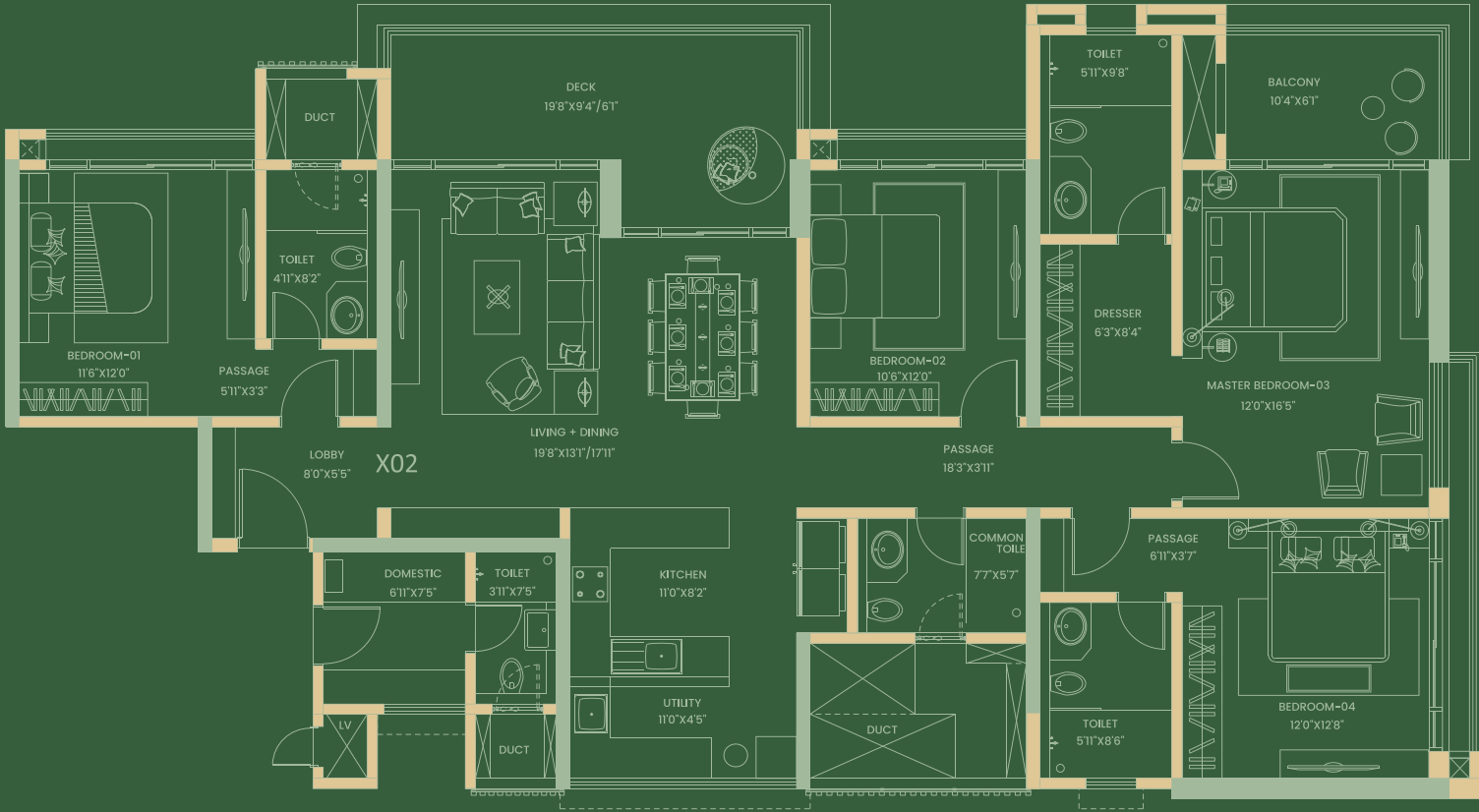
KEYPLAN

\*NOTE - ALL DIMENSIONS SHOWN ARE WALL TO WALL, FROM UNFINISHED SURFACES  
FURNITURE SHOWN IS INDICATIVE ONLY AND IS NOT PART OF STANDARD PRODUCT OFFERING  
DIMENSIONS SHOWN ARE INDICATIVE OF THE SPACE AVAILABLE AND DIMENSIONS MAY OVERLAP IN PART  
\* PLEASE REFER THIS SALE UNIT PLAN ALONG WITH CORRESPONDING SALE FLOOR PLAN



X02  
4BHK (CANAL FACING)

AREA OF FLAT	153.33 SQ. M
AREA OF DECKS	23.90 SQ. M
TOTAL AREA OF FLAT	177.23 SQ. M
	1907.70 SQ. FT



KEYPLAN

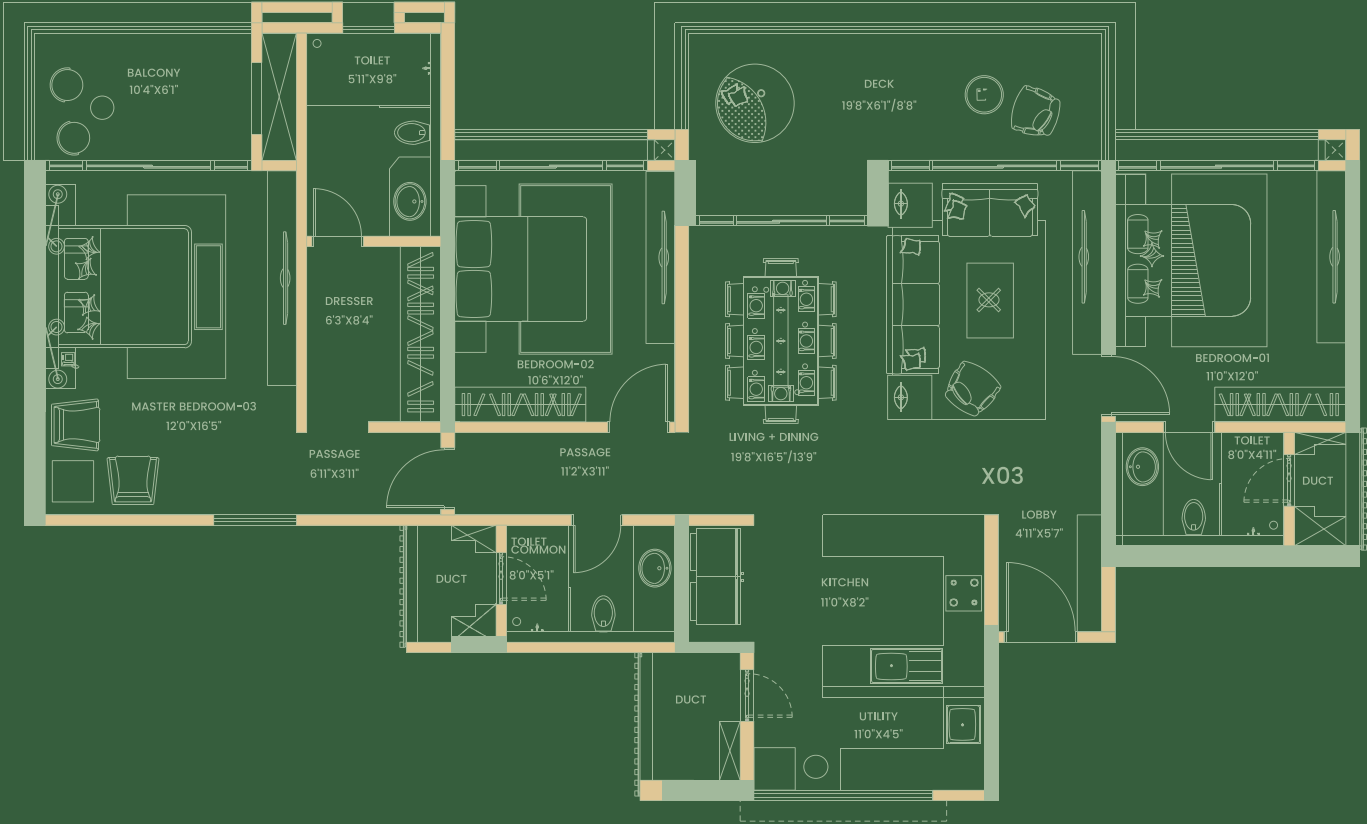
\*NOTE - ALL DIMENSIONS SHOWN ARE WALL TO WALL, FROM UNFINISHED SURFACES  
FURNITURE SHOWN IS INDICATIVE ONLY AND IS NOT PART OF STANDARD PRODUCT OFFERING  
DIMENSIONS SHOWN ARE INDICATIVE OF THE SPACE AVAILABLE AND DIMENSIONS MAY OVERLAP IN PART  
\* PLEASE REFER THIS SALE UNIT PLAN ALONG WITH CORRESPONDING SALE FLOOR PLAN





X03  
3BHK (CANAL FACING)

AREA OF FLAT	116.27 SQ. M
AREA OF DECKS	23.40 SQ. M
TOTAL AREA OF FLAT	139.67 SQ. M
	1503.40 SQ. FT



TOWER 4



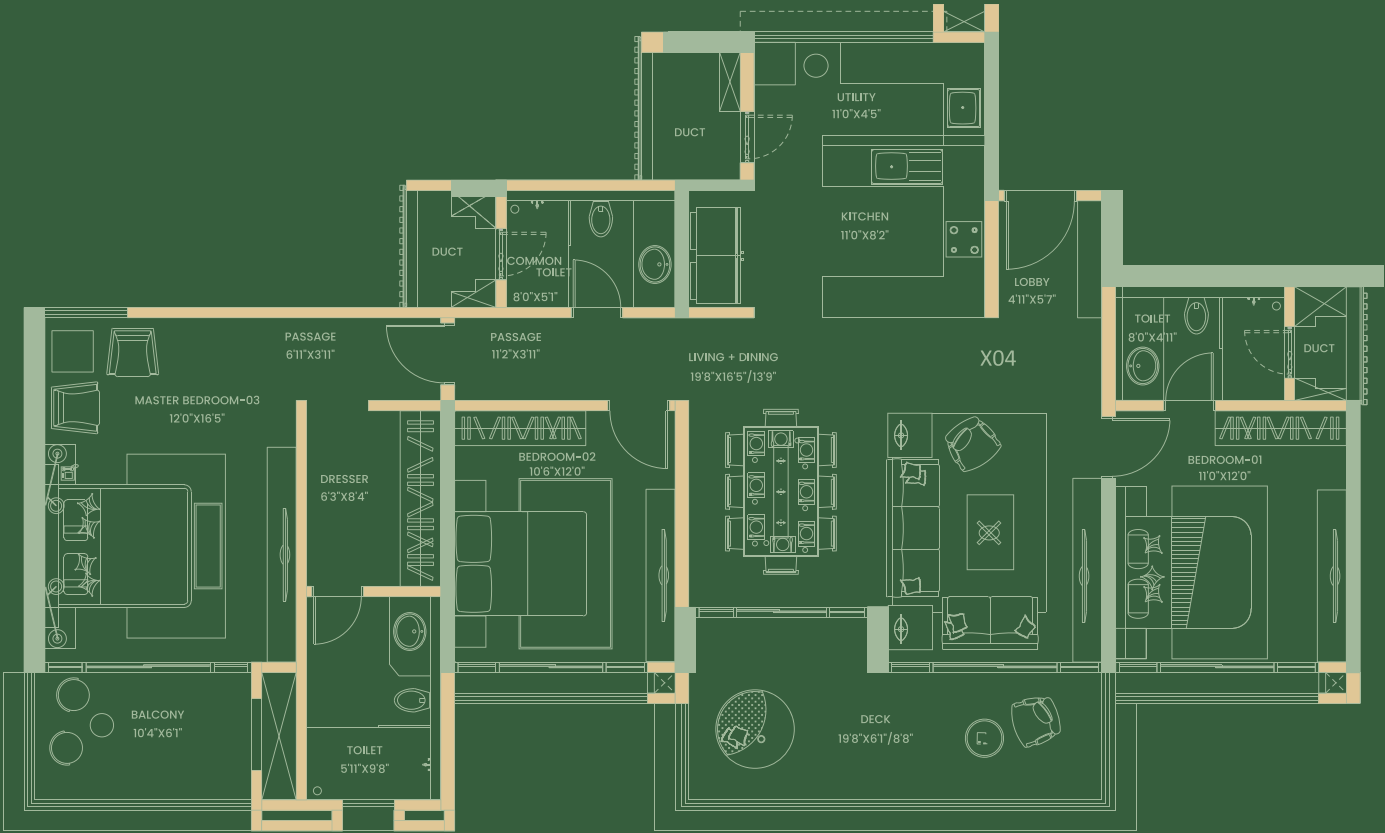
KEYPLAN



\*NOTE - ALL DIMENSIONS SHOWN ARE WALL TO WALL, FROM UNFINISHED SURFACES  
FURNITURE SHOWN IS INDICATIVE ONLY AND IS NOT PART OF STANDARD PRODUCT OFFERING  
DIMENSIONS SHOWN ARE INDICATIVE OF THE SPACE AVAILABLE AND DIMENSIONS MAY OVERLAP IN PART  
\* PLEASE REFER THIS SALE UNIT PLAN ALONG WITH CORRESPONDING SALE FLOOR PLAN

X04  
3BHK (VILLA FACING)

AREA OF FLAT	116.27 SQ. M
AREA OF DECKS	23.40 SQ. M
TOTAL AREA OF FLAT	139.67 SQ. M
	1503.40 SQ. FT



TOWER 4



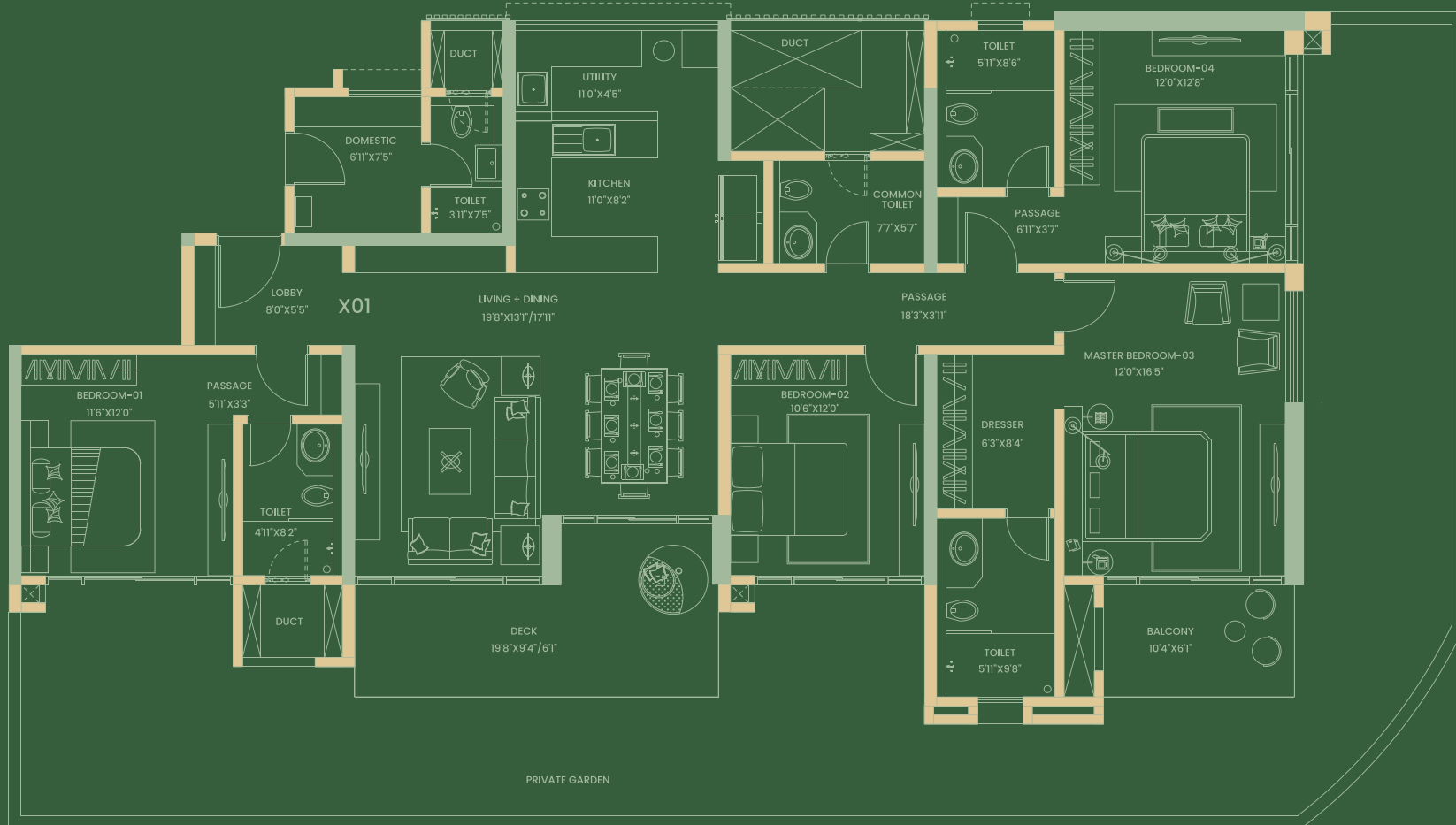
KEYPLAN

\*NOTE - ALL DIMENSIONS SHOWN ARE WALL TO WALL, FROM UNFINISHED SURFACES  
FURNITURE SHOWN IS INDICATIVE ONLY AND IS NOT PART OF STANDARD PRODUCT OFFERING  
DIMENSIONS SHOWN ARE INDICATIVE OF THE SPACE AVAILABLE AND DIMENSIONS MAY OVERLAP IN PART  
\* PLEASE REFER THIS SALE UNIT PLAN ALONG WITH CORRESPONDING SALE FLOOR PLAN



**X01**  
**4BHK (VILLA FACING)**

AREA OF FLAT	153.33 SQ.M
AREA OF DECKS	23.90 SQ.M
TOTAL AREA OF FLAT	177.23 SQ.M
	1907.7 SQ.FT
PRIVATE GARDEN AREA	81.90 SQ. M
	881.56 SQ. FT



TOWER 4



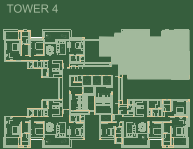
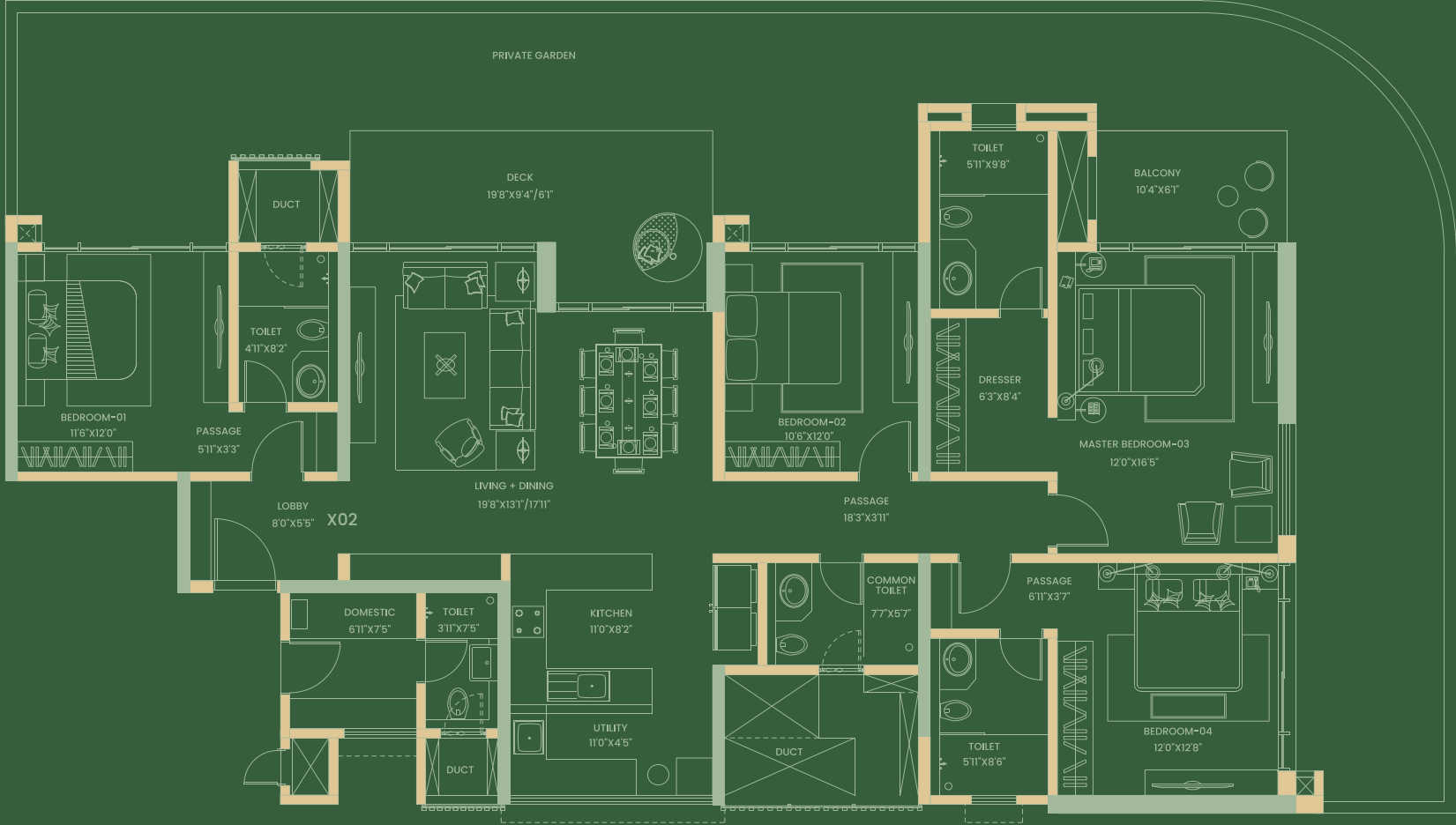
KEYPLAN



\*NOTE - ALL DIMENSIONS SHOWN ARE WALL TO WALL, FROM UNFINISHED SURFACES  
 FURNITURE SHOWN IS INDICATIVE ONLY AND IS NOT PART OF STANDARD PRODUCT OFFERING  
 DIMENSIONS SHOWN ARE INDICATIVE OF THE SPACE AVAILABLE AND DIMENSIONS MAY OVERLAP IN PART  
 \* PLEASE REFER THIS SALE UNIT PLAN ALONG WITH CORRESPONDING SALE FLOOR PLAN

X02  
4BHK (CANAL FACING)

AREA OF FLAT	153.33 SQ.M
AREA OF DECKS	23.90 SQ.M
TOTAL AREA OF FLAT	177.23 SQ.M
	1907.7 SQ.FT
PRIVATE GARDEN AREA	81.82 SQ. M
	880.7 SQ. FT



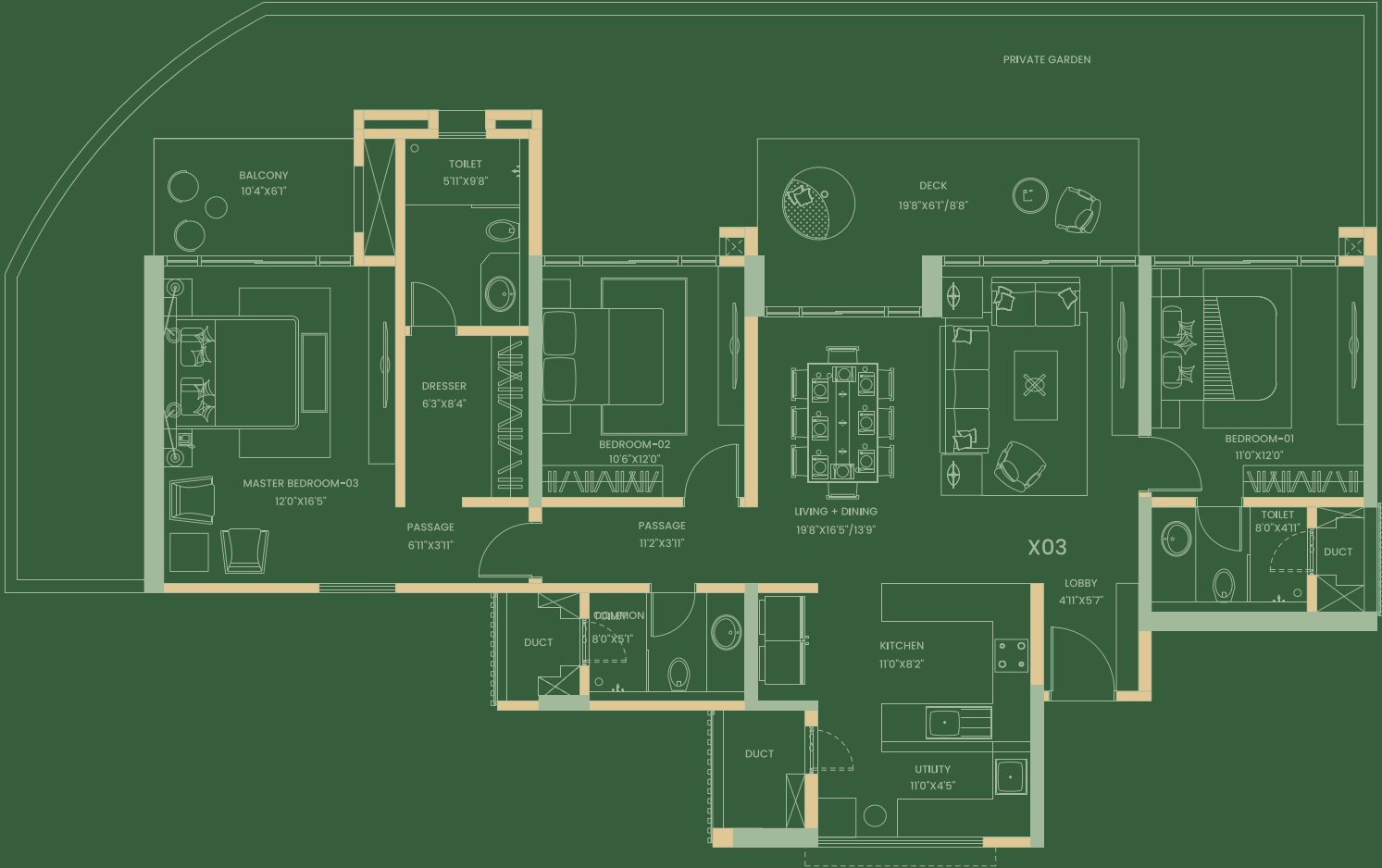
KEYPLAN



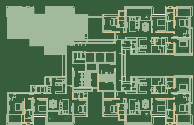
\*NOTE - ALL DIMENSIONS SHOWN ARE WALL TO WALL, FROM UNFINISHED SURFACES  
FURNITURE SHOWN IS INDICATIVE ONLY AND IS NOT PART OF STANDARD PRODUCT OFFERING  
DIMENSIONS SHOWN ARE INDICATIVE OF THE SPACE AVAILABLE AND DIMENSIONS MAY OVERLAP IN PART  
\* PLEASE REFER THIS SALE UNIT PLAN ALONG WITH CORRESPONDING SALE FLOOR PLAN

X03  
3BHK (CANAL FACING)

AREA OF FLAT	116.27 SQ.M
AREA OF DECKS	23.40 SQ.M
TOTAL AREA OF FLAT	139.67 SQ.M 1503.4 SQ.FT
PRIVATE GARDEN AREA	60.29 SQ. M 648.96 SQ. FT



TOWER 4



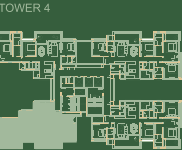
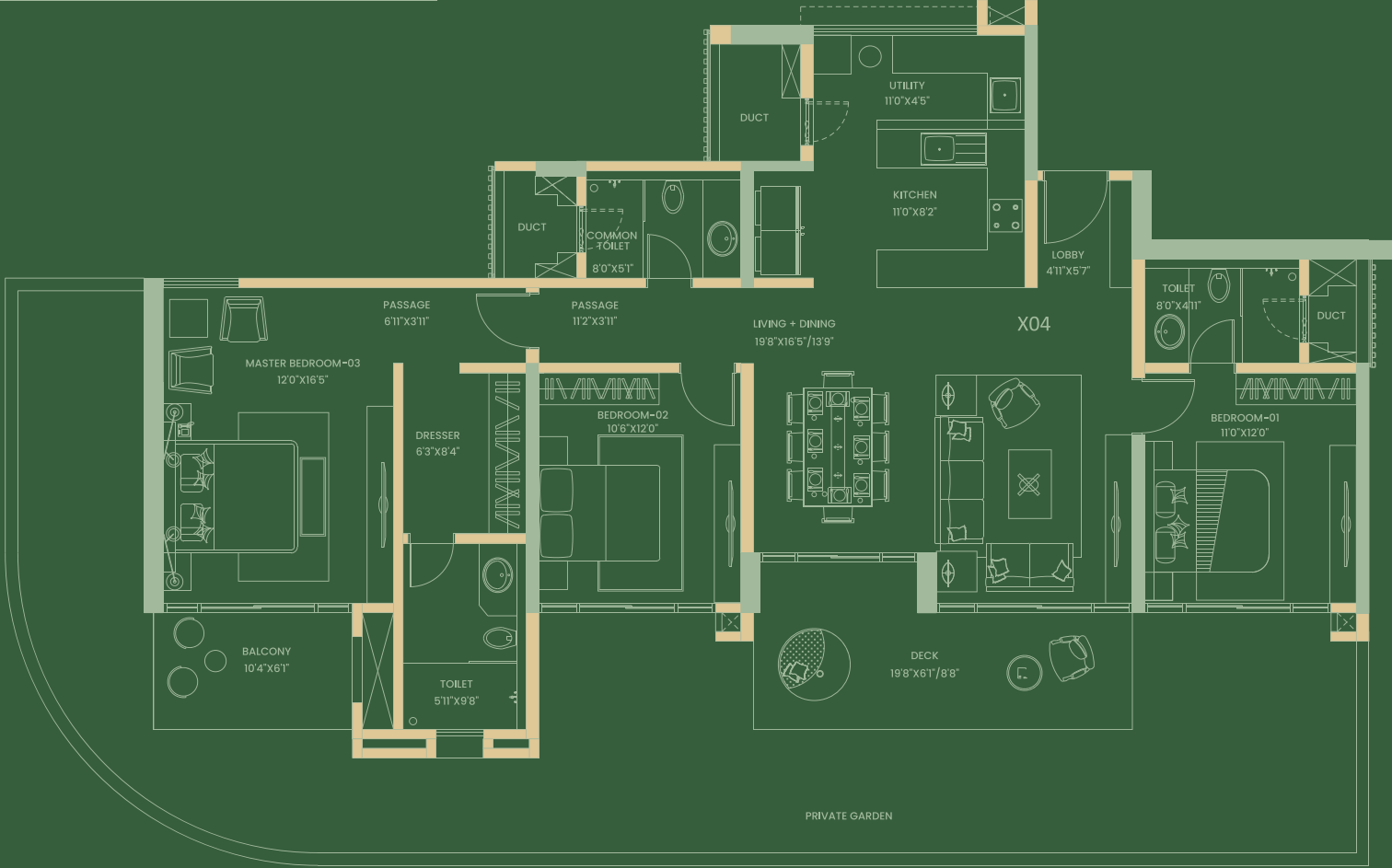
KEYPLAN

\*NOTE - ALL DIMENSIONS SHOWN ARE WALL TO WALL, FROM UNFINISHED SURFACES  
FURNITURE SHOWN IS INDICATIVE ONLY AND IS NOT PART OF STANDARD PRODUCT OFFERING  
DIMENSIONS SHOWN ARE INDICATIVE OF THE SPACE AVAILABLE AND DIMENSIONS MAY OVERLAP IN PART  
\* PLEASE REFER THIS SALE UNIT PLAN ALONG WITH CORRESPONDING SALE FLOOR PLAN



X04  
3BHK (VILLA FACING)

AREA OF FLAT	116.27 SQ.M
AREA OF DECKS	23.40 SQ.M
TOTAL AREA OF FLAT	139.67 SQ.M 1503.4 SQ.FT
PRIVATE GARDEN AREA	62.08 SQ. M 668.22 SQ. FT



KEYPLAN

\*NOTE - ALL DIMENSIONS SHOWN ARE WALL TO WALL, FROM UNFINISHED SURFACES  
FURNITURE SHOWN IS INDICATIVE ONLY AND IS NOT PART OF STANDARD PRODUCT OFFERING  
DIMENSIONS SHOWN ARE INDICATIVE OF THE SPACE AVAILABLE AND DIMENSIONS MAY OVERLAP IN PART  
\* PLEASE REFER THIS SALE UNIT PLAN ALONG WITH CORRESPONDING SALE FLOOR PLAN



For RERA Details:



**Site Address :** Hadapasar Annexe, Pune - Solapur Highway, Shewalewadi, Taluka - Haveli, District - Pune. Pin - 412307.

**MahaRERA Number:** Mango Tree Villa Tower 4 - P52100053966 | For details visit: <https://maharera.maharashtra.gov.in/>

**Disclaimer:** Palchin Real Estates Private Limited is one of the participants in the larger scheme of development to be named as SP Kingstown. Palchin Real Estates Private Limited is presently developing residential buildings on a portion of the lands wherein it has acquired rights, which lands have been offered to form part of SP Kingstown. It presently appears that the other individual owners of portions of the larger land, agreed to form part of SP Kingstown, are aligning themselves, inter-alia, towards commercial, retail, healthcare and infrastructure development subject to approvals and reservations affecting those lands from time to time. All representations made herein are intended to cover only the residential development by Palchin Real Estates Private Limited while giving you a flavour of what is expected in the neighbourhood as development progresses for other owners/developers in due course. This material does not constitute an offer and/or contract of any type. Any prospective sale shall be governed by the terms and agreement for sale to be entered into between the parties. Before deciding on the purchase, customers are requested to independently either directly or through the customer's legal/finance advisors, thoroughly verify all details/documents pertaining to the project. Mango Tree Villa Tower 4 are mortgaged to Vistra ITCL (India) Limited, whose NOC will be provided for sale of flats therein. T&C apply. For more information, visit <https://shapoorjirealestate.com/>

